

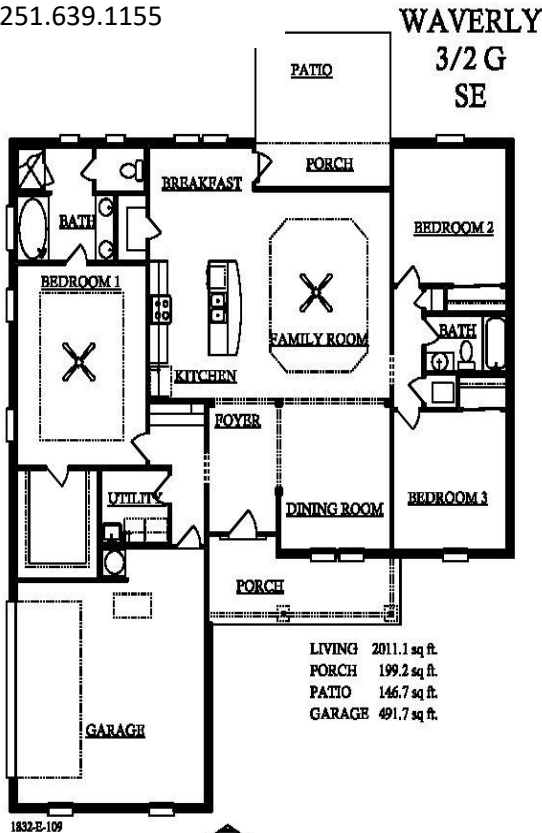


6156 Omni Park Drive
 Mobile, Al 36609
 251.639.1155

**THIS HOME IS LOCATED AT
 9163 MAXWELL DR N
 (LOT#26 LABRADOR RUN)**

Home Details

\$235,900
 3 Bedrooms
 2 Full Baths
 2,201 Sq. Ft.
 2 Car Garage



1832-B-109



No detail was overlooked with this quality constructed, all electric, John Howard Home. From the low maintenance brick exterior with dimensional shingles to the open and inviting floor plan with beautiful built cabinets and stainless steel appliances, this WAVERLY home is just what you are looking for. Open floor plan with a raised ceiling family room. Opens into the breakfast room and kitchen. Kitchen features granite counter tops with a bar area that opens into the family room. This plan also boast of a formal dining room off the gracious foyer. Raised ceiling with ceiling fan in the split master bedroom plan. Master bath has a nice size walk in closet, garden tub with separate shower and double vanities.

Don't forget the beautiful designer lighting. Builder's standard features include: LP TechShield Radiant Heat Barrier in attic, Square D Electrical Panel w/Surge Breaker, keyless entry Schlage lock system, DSC security alarm, 2-10 Home Owner Warranty and Storm Tech Shutter Systems. This home definitely is a MUST SEE

Of course don't forget this John Howard Home home is built as a silver level FORTIFIED home.

CONTACT US FOR MORE INFO:

CALL TONYEA WEBER AT 251.300.3073/ 251.639.1155

OR EMAIL TONYEA TW@JOHNHOWARDHOMES.COM

DIRECTIONS:

- West on Three Notch Road
- Turn Left on McDonald Rd.
- Go 1.2 mile to Belmont Park Dr
- Go Left on Labrador Trail
- Go Left on Labrador Trail E
- Left on Rex Dr
- Next Left on Maxwell Dr