



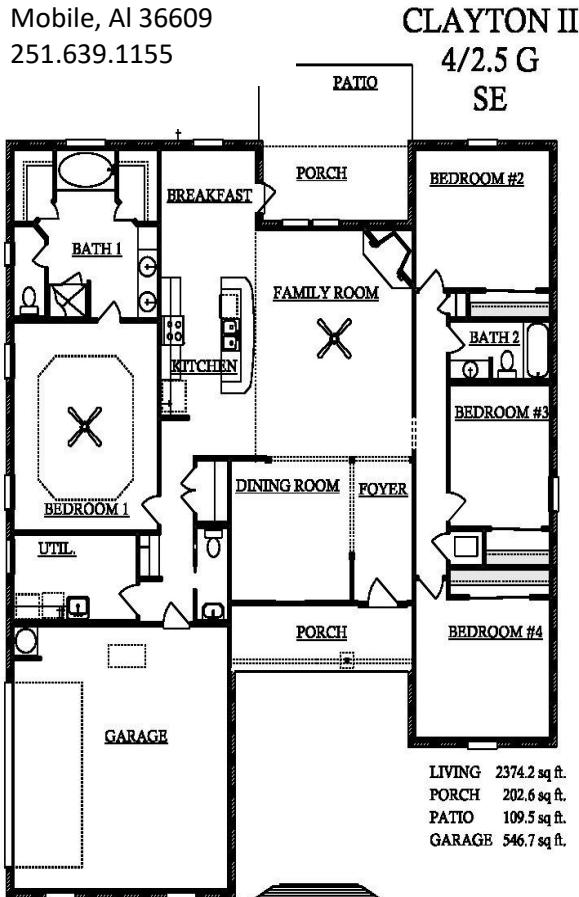
**COMPANIES**  
BUILDER · REALTOR

6156 Omni Park Drive  
Mobile, Al 36609  
251.639.1155

**THIS HOME IS LOCATED AT  
2750 WILDFLOWER DRIVE WEST  
(LOT#3 WILDFLOWER PLACE)**

### Home Details

\$256,900  
5 Bedrooms  
2 Full Baths | 1 Half Bath  
2,374 Sq. Ft.  
2 Car Garage



Can't wait for you to come see and enjoy the quality of a John Howard new home. From the low maintenance brick exterior with dimensional shingles to the open and inviting floor plan with beautiful built cabinets, granite counter top, gracious pantry and stainless steel appliances in the kitchen. This CLAYTON II plan features a split bedroom layout, with an open kitchen to the family room. Everyone gets to stay in all the activity while preparing the meal. This plan has that added plus of both a formal Dining Room and a Breakfast Room.

NOTE: 10ft ceilings in the Family Room , 10ft in the Dining Room and a gorgeous 10 ft tray ceiling in the Master Bedroom.

The Master Bath has the luxury of a separate tub and shower, 2 nice size walk-in closet, and double vanities. Plenty of room for everyone. Covered entry porch and a covered porch and patio in the rear. Makes for plenty of outside entertaining or just watching the kids enjoy their backyard.

Builder's standard features include: **LP TechShield Radiant Heat Barrier** in attic, **Square D Electrical Panel** w/Surge Breaker, keyless entry **Schlage lock** system, **DSC security alarm**, **2-10 Home Owner Warranty** and **Storm Tech Shutter Systems**. This home definitely is a **MUST SEE**.

### CONTACT US FOR MORE INFO:

CALL TONYEA WEBER AT 251.300.3073/  
251.639.1155

OR EMAIL TONYEA TW@JOHNHOWARDHOMES.COM

### DIRECTIONS:

- West on Airport Blvd
- Wildflower Drive is .9 miles past Newman Drive
- Wildflower Place is on the left